

# TULMAR



Tulmar Safety Systems

## Ensuring Protection with Trusted Civil Safety Equipment

CAPABILITY OVERVIEW



TULMAR

[www.tulmar.com](http://www.tulmar.com)

# KOVA Electric Vehicle (EV) Fire Blanket



[Watch Video](#)



# KOVA

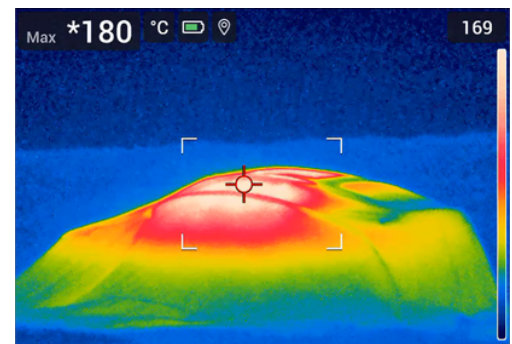
## Electric Vehicle (EV) Fire Blanket

Designed to isolate and contain fires for all passenger and small industrial EVs, KOVA measures 8.5 m × 11.5 m (28' x 38') and withstands temperatures up to 1650°C (3000 °F). With reinforced handles and high-visibility red centering indicators, it ensures quick, precise placement—giving firefighters the confidence to rapidly control EV fires, protect surroundings, and reduce toxic-gas exposure.

**Made in Canada. Engineered for Protection.**

### The KOVA Advantage

- Covers all passenger and small industrial EVs
- Withstands heat up to 1650°C (3000 °F)
- Breathable fabric reduces gas build-up and allows water spray penetration
- Saves water
- Quick-release bag: unpack and deploy
- 8 reinforced handles
- High-visibility red centering indicators



### Li-Ion Battery Fires Are Different

- Triggered by Thermal Runaway
- Burn hotter, longer, faster
- Can reignite hours or days later
- Require up to 60,000L (15,850 gl) of water to extinguish





# KOVA

## Electric Vehicle (EV) Fire Blanket

### The Protocol



Deploy KOVA over burning EV



Tuck KOVA edges to reduce oxygen



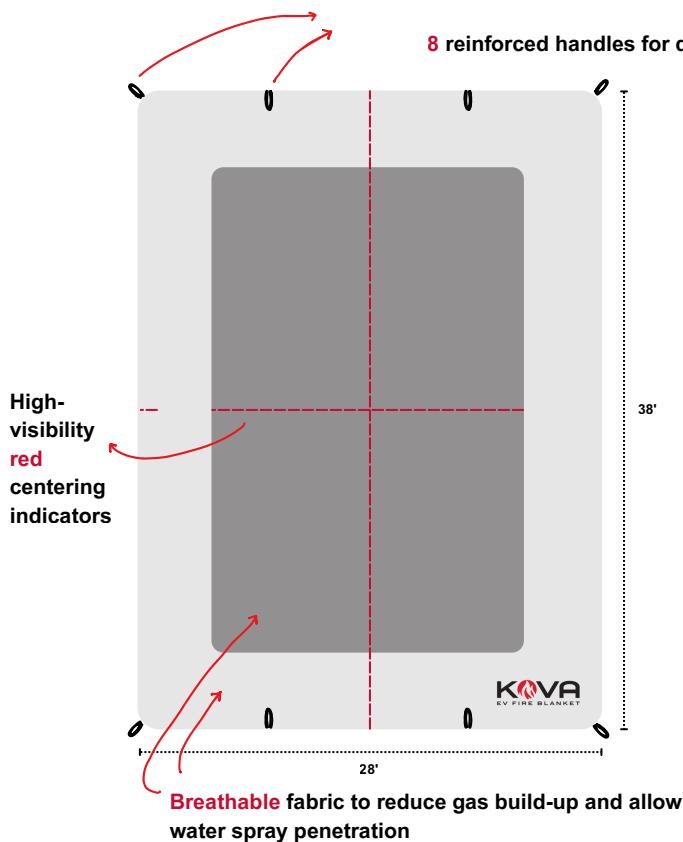
Monitor fire heat & douse KOVA with water



Remove KOVA & extinguish EV with water



Re-cover EV for transport and storage



	DEPLOYED	PACKAGED
Weight	68 kg (152 lbs)	
Length	11.5 m (38')	1 m (40")
Width	8.5 m (28')	60 cm (23")
Depth		25 cm (10")

# Inflatable Shelter System



[Watch Video](#)



# Inflatable Shelter System

**Fast Setup. Modular. Rugged. Portable.**

## Specifically Engineered for Use As

- Rehab Shelter
- Command Post
- Triage Area
- Decontamination Station
- Surge Capacity Shelter
- Isolation / Infection Control Shelter
- Temporary Morgue
- Field Clinic or First Aid Station
- Sleeping Quarters / Rest Area
- Equipment Staging Shelter
- Field Workspace / Admin Space

## Performance Specifications

Operating Temperature Range	-30°C to 60°C (-22°F to 140°F)
Operating Air Pressure	3 PSI
Wind Rating	37 mph (60 km/h)
Snow Load	4.1 lbs/sq ft (20 kg/sq m)



Size	Interior Area	Packed Dimensions	Weight
12' x 15' (3.7m x 4.6m)	180 sq ft (17 sq m)	24" x 24" x 52" (0.61m x 0.61m x 1.35m)	225 lbs (102 kg)
15' x 20' (4.6m x 6.1m)	300 sq ft (27.5 sq m)	28" x 28" x 60" (0.71m x 0.71m x 1.52m)	370 lbs (168 kg)





# Inflatable Shelter System

**Fast Setup. Modular. Rugged. Portable.**

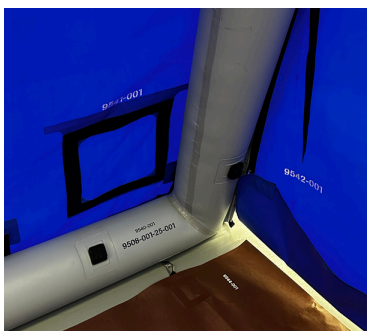
## Key Features

- Modular Build: Interconnect panels available to join multiple shelters
- Inflates in under 5 minutes with two people
- HVAC-Ready: Two square ports for ventilation or heating
- Resistant to fungus, mildew, and bacteria
- Anchoring Options: Side ballasts and exterior D-rings
- Daylight Access
- Available in red and blue

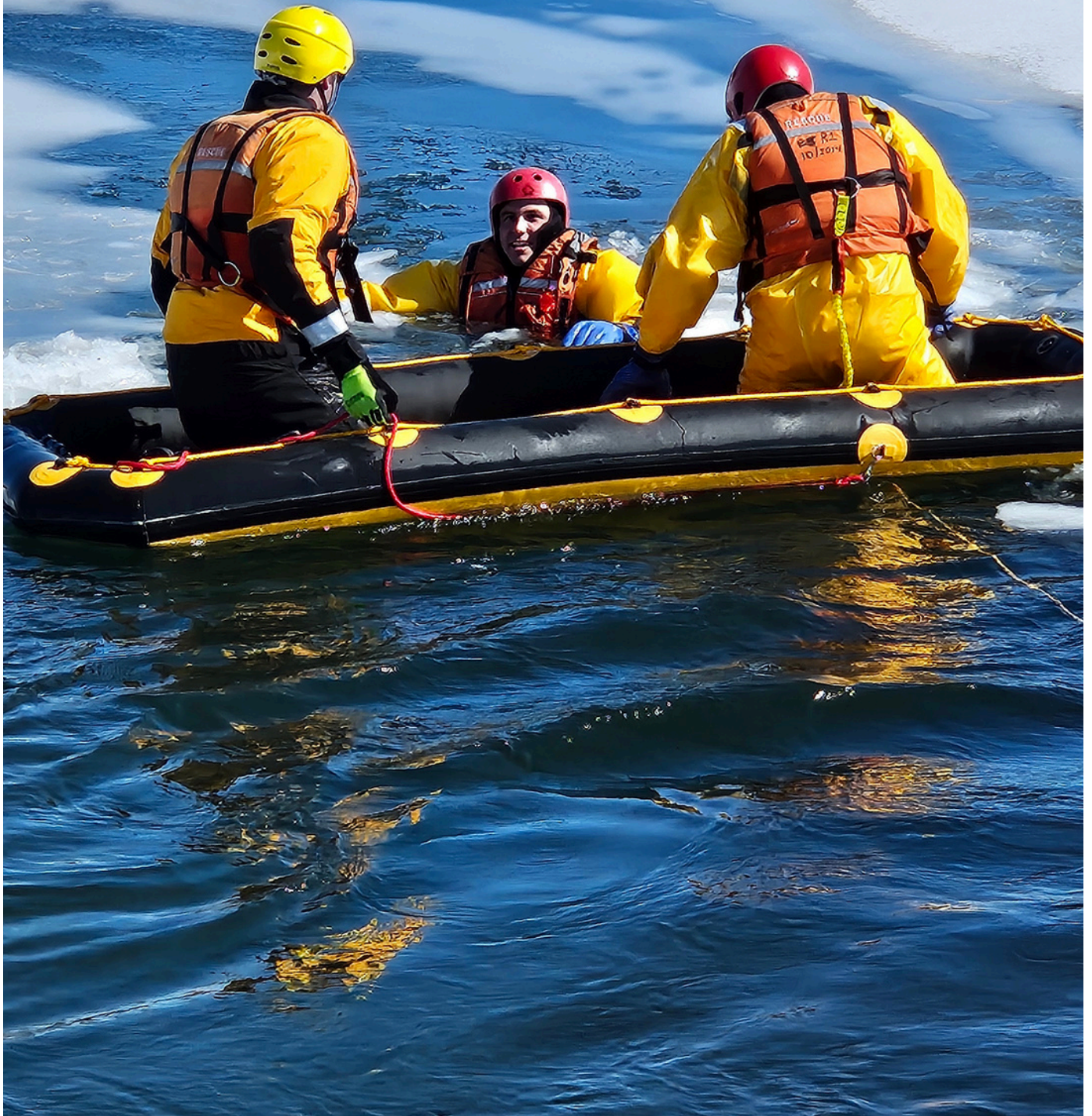


## Options and Accessories

- Partition walls
- Weight bags
- Heating unit
- Custom stenciled lettering
- Side wall windows
- Additional shelter connection panels



# LifeRamp™ Rescue System



**TULMAR**

[www.tulmar.com](http://www.tulmar.com)



# LifeRamp™ Rescue System

Designed for Rapid, Versatile Rescue Operations

## Specifically Engineered for Use As

- Water Rescue
- Ice-Water Rescue
- Mud and Low Tide Operations
- Flood Water Rescue
- Emergency Evacuation

**Extended Reach:** Multiple LifeRamp™ units can be tethered together, enabling rescuers to reach difficult or inaccessible locations, such as across large bodies of water, ice floes, or hazardous terrain.

Size	Weight	Max Load Capacity
10' (3.7m)	28 lbs (12.7 kg)	1,100 lbs (499 kg)
15' (4.6m)	42 lbs (19 kg)	1,700 lbs (771 kg)
30' (9.1m)	78 lbs (35.4 kg)	3,200 lbs (1,451 kg)
50' (15.2m)	90 lbs (40.8 kg)	4,500 lbs (2,041 kg)
80' (24.4m)	190 lbs (86.2 kg)	7,000 lbs (3,175 kg)





# LifeRamp™ Rescue System

Designed for Rapid, Versatile Rescue Operations

## Features

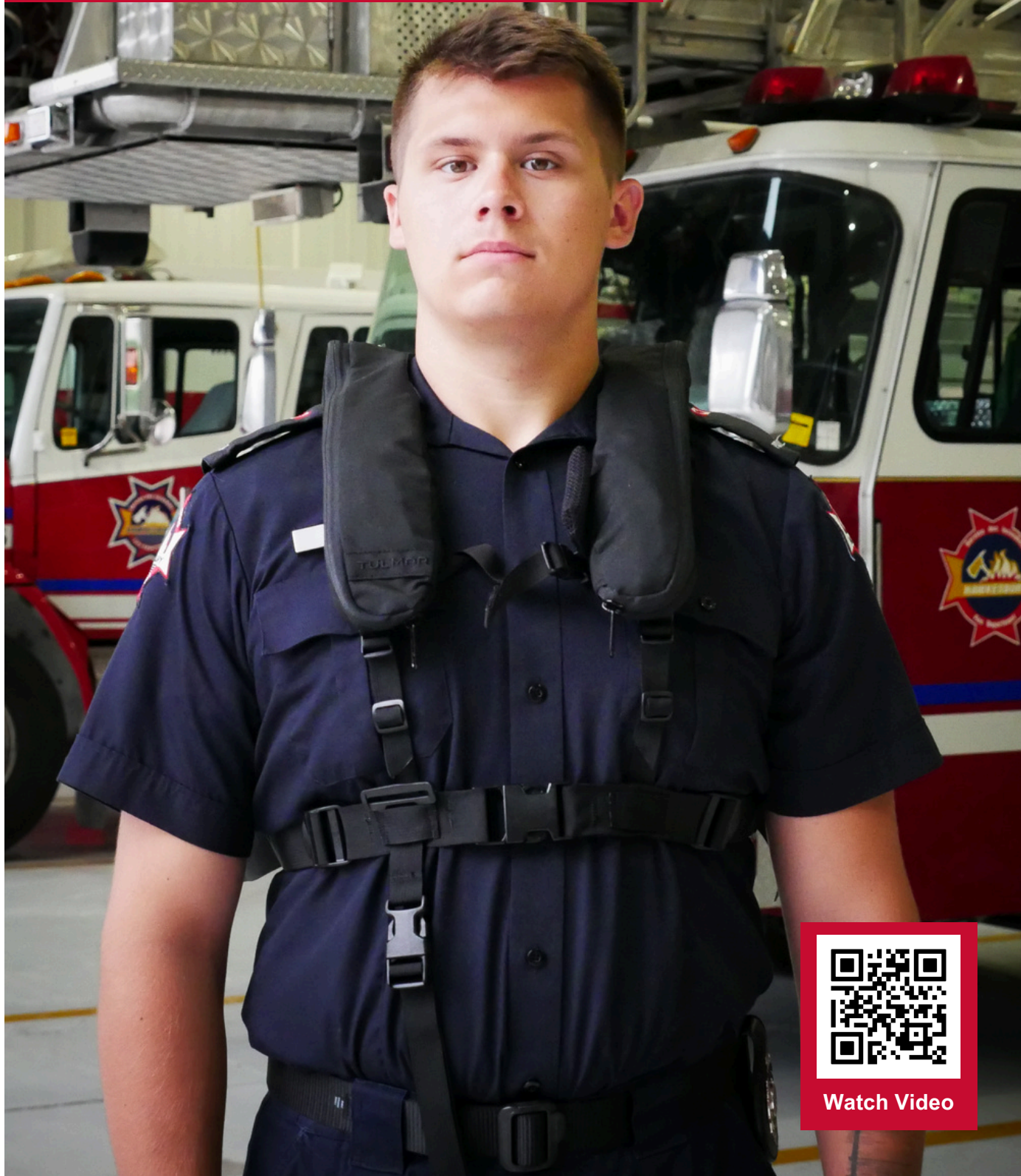
- Rapid Inflation
- Weight-to-Load Ratio
- Versatility
- Modular Reach
- Compact Storage

## Kit Includes

- 28" SCBA-adapted hose assembly
- Valve adapter for compressor inflation
- Socket tool for deflation
- Field repair kit
- Red cord pivot line
- Bilingual user manual
- Yellow carrying valise



# GALEO Tactical Personal Flotation Device



Watch Video

**TULMAR**

[www.tulmar.com](http://www.tulmar.com)

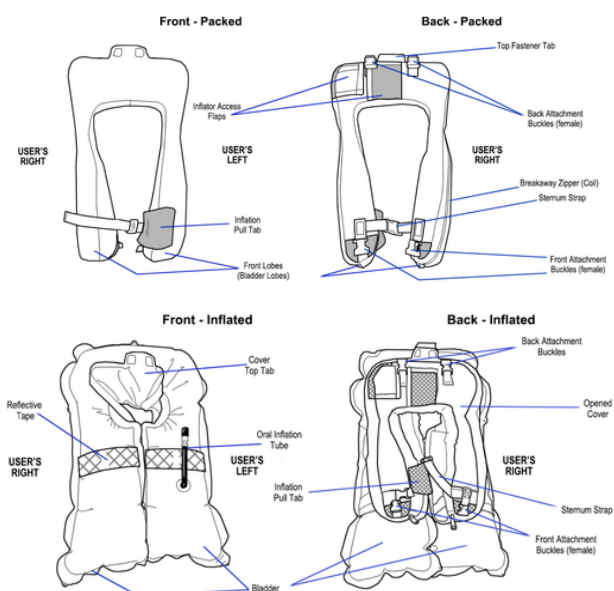


# GALEO Systems

## Tactical Personal Flotation Device (PFD)



- **Low Profile** - No impact to shooting, moving, and communicating.
- **Inflation Confidence** - Assurance of activation regardless of initiation method.
- **Buoyancy** - Ample buoyancy for a fully equipped Operator of any size or weight.
- **Righting Inflation** - Guarantee of Operator being head-up and clear of water line regardless of orientation on activation or water conditions.
- **Integrability** - Seamlessly integrates with any system.
- **Stand-Alone Ability** - Harness confidently facilitates discrete applications.
- **Simplicity** - Simple construction allows Operator to easily and quickly re-arm and re-pack for training or operational use.
- **Robustness** - Proven durable materials ensures confident use under arduous conditions.



# TULMAR



## Get in Touch!

**Colin Robinson**  
Director of Sales

(613) 632-1282 x292  
[crobinson@tulmar.com](mailto:crobinson@tulmar.com)  
[www.tulmar.com](http://www.tulmar.com)